



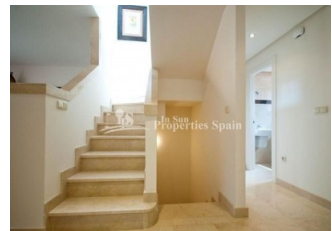
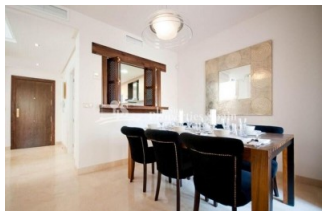
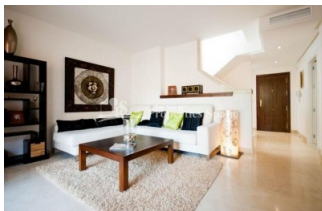
REF: # 5873

SAN MIGUEL (SAN MIGUEL)



INFO

PRIS:	180.000 €
BOLIG TYPE:	Rekkehus
STED:	San Miguel (San Miguel)
SOVEROM:	2
Bad:	2
BOAREAL (m2):	182
TOMT (m2):	-
Terrasse (m2):	-
ÅR:	
ETASJER:	-
MELDING	-

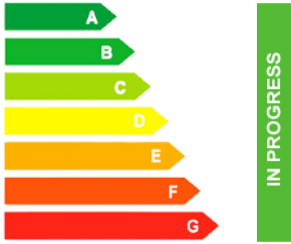


BESKRIVELSE

The exclusive residential of "Cerro del Sol" SAN MIGUEL DE SALINAS is KEY READY and consists of two or three bedrooms (town house-style) Duplex. The Mediterranean style development is set around beautiful gardens and a large tropical swimming pool. Surrounded by the salt lakes of Torre Vieja and La Mata, and near to the National Park, Sierra Escalona, with 150,000 square meters of Mediterranean Pine Forest. The properties come Fully Furnished and are Key Ready! 2 bed, 2 bath from €180,000 and 3 bed, 3 bath from €239,000. San Miguel de Salinas is a traditional Spanish Village with an array of amenities for permanent residence, everything from cafes, bars, restaurants, supermarkets, medical centre and not to forget bus stop, band stand, a municipal open air swimming pool for use during the summer and a busy street market every Wednesday morning. It is set on a hill above the pink Laguna de Torre Vieja and offers impressive views over the countryside.

ENERGETIC CERTIFIED



STIL	UTSIKT	DISTANSE TIL :	ORIENTERING
<ul style="list-style-type: none"> Mediterranean 	<ul style="list-style-type: none"> Panorama Fjell utsikt 	Strand : 5 Km Flyplass: 50 Km Sentrum : 500 m	South East West
MØBLER	PARKERING NR BILER	FLOORING	KJØKKEN
<ul style="list-style-type: none"> Furnished 	: 1	<ul style="list-style-type: none"> Fliser Stein 	<ul style="list-style-type: none"> Åpent kjøkken Hvitevarer
HAGE TERASSER	EXTRA	ENERGETIC CERTIFIED	
<ul style="list-style-type: none"> Ooverbygd terrasse Åpen terrasse Palme trær Opparbeidet hage Stein murer Felles hage 	<ul style="list-style-type: none"> Innebygde garderober 	 <p>The image shows a vertical energy efficiency scale with seven horizontal bars labeled A through G. The bars are colored in a gradient from dark green at the top to red at the bottom. A vertical green bar on the right side of the scale is labeled 'IN PROGRESS'.</p>	

"OUR EXPERIENCE IS YOUR GUARANTEE"