



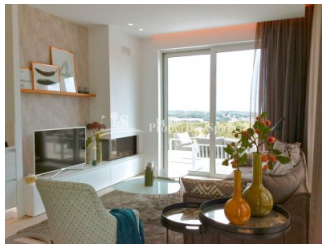
REF: # 6368

ORIHUELA COSTA (LAS COLINAS GOLF CLUB)



INFO

PRIS:	469.000 €
BOLIG TYPE:	Villa
STED:	Orihuela Costa (Las Colinas Golf Club)
SOVEROM:	3
Bad:	2
BOAREAL (m2):	125
TOMT (m2):	509
Terrasse (m2):	-
ÅR:	
ETASJER:	-
MELDING	-



BESKRIVELSE

Final houses remaining !! Located in one of the highest points of the LAS COLINAS GOLF & COUNTRY CLUB with spectacular sea views is Comunidad Orquidea, comprising of 15 villas. You can choose between 2 different housing models, the Villa Triguero and the Villa Jilguero. Villas where every detail has been fully attended to through the integration of top-quality materials and technology, in order to offer our customers properties where living is a pleasure. All boast great fittings and wide, open spaces that merge with the landscape. 125m2, 3 bedroom, 2 bathroom Villa Jilguero on a 509m2 plot. Qualities include; Domestic System, aerothermal clima system (floor heating in the whole villa running with water, ac with renewal of air for the heating of water in the villa), infinity pool with electrolysis 14.5x4.5m., garden finished, bioclimatic pergola with Orientale slats (managed by remote control), package of lights (inside and outside), interior electrical roller blinds in

bedrooms, appliances (fridge, steam oven, microwave/oven, extractor/purifier hood, vitro ceramic of induction, dishwasher, washer machine), and reverse osmosis filter in the kitchen. The Villas and Country Club are set within a 330 hectare valley among the hills, facing the sea, through which a championship golf course runs. It has been developed with low housing density, is embedded in its surroundings and environmentally respectful. A place to escape to and enjoy the 200,000m2 of natural area and landscaped paths through indigenous vegetation and lemon and orange tree orchards. Just 5km from Las Colinas Beach Club, just over 10 minutes drive from Zenia Boulevard and 50 minutes from Alicante Airport.



STIL	UTSIKT	DISTANSE TIL :	ORIENTERING
<ul style="list-style-type: none"> Modern Contemporary 	<ul style="list-style-type: none"> Panorama 	Strand : 5 Km Flyplass: 50 Km Sentrum : 5 Km	South East West
MØBLER	PARKERING NR BILER	HOVED BOLIG	FLOORING
<ul style="list-style-type: none"> Uten møbler 	: 2	<ul style="list-style-type: none"> Lagerrom 	<ul style="list-style-type: none"> Fliser Stein
KJØKKEN	HAGE TERASSER	OPPVARMING	ENERGETIC CERTIFIED
<ul style="list-style-type: none"> Åpent kjøkken Hvitevarer Granit benkeplate 	<ul style="list-style-type: none"> Ooverbygd terrasse Åpen terrasse Utebelysning Frukt trær Opparbeidet hage Inngjerdet Gress Stein murer Privat hage 	<ul style="list-style-type: none"> Gulv varme Gulv varme bad 	<div> <div> ABygde garderob B C D E F G </div> <div> IN PROGRESS </div> </div>

"OUR EXPERIENCE IS YOUR GUARANTEE"