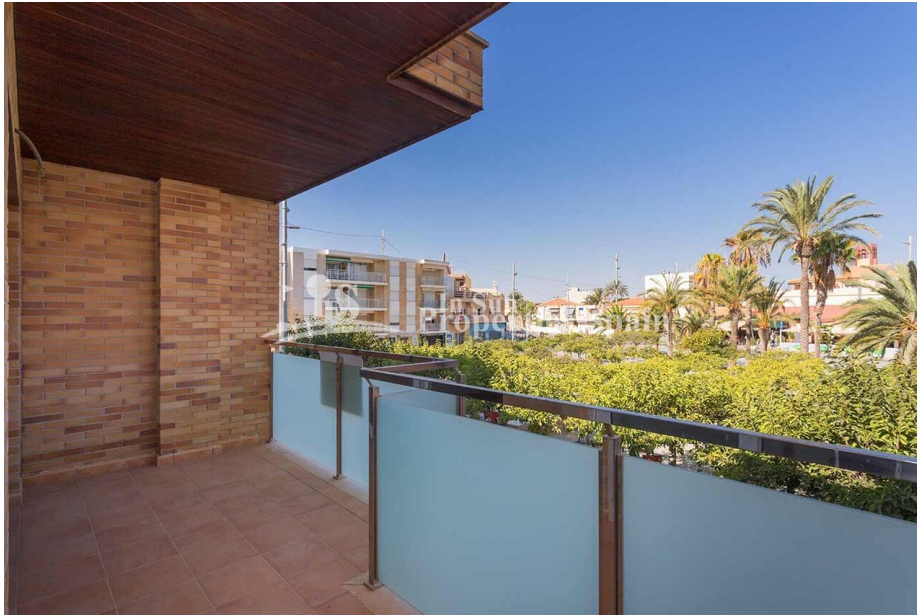




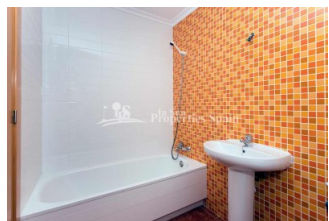
REF: # 6387

ORIHUELA COSTA (TORRE DE LA HORADADA)



INFO

PRIS:	139.000 €
BOLIG TYPE:	Leilighet
STED:	Orihuela Costa (Torre de la Horadada)
SOVEROM:	2
Bad:	2
BOAREAL (m2):	71
TOMT (m2):	-
Terrasse (m2):	29
ÅR:	2008
ETASJER:	-
MELDING	-



BESKRIVELSE

In a luxury block of just 4 lift assisted apartments which were built in 2008, these two, first floor properties have never been used and enjoy the best location in the lovely seaside resort of Torre de la Horadada. With direct access from the main square with its fantastic selection of bars and restaurants, and with the marina and beach just meters away, each apartment comprises a spacious hallway, living/dining room with private balcony that overlooks the square, main bedroom with en-suite bathroom and private balcony, second bedroom and second bathroom, plus a separate kitchen with access to a large rear terrace. There is a private solarium with views to the marina to be shared by just the two apartments and a large storeroom for each apartment off the solarium. White good and pre-installation of ducted AC included. Built to the highest standard, they provide a unique opportunity to invest in a prime location on the southern Costa Blanca, providing an ideal base for winter

sun as well as a fantastic summer holiday home with excellent rental potential. Just a minute's walk to the marina and the beach. Torre de la Horadada is located south of Alicante in a beautiful location on the coast. There are lots of restaurants, bars and shops, also water sports, diving and snorkelling. It is well connected just 15 minutes from San Javier airport and 40 minutes from Alicante airport, with easy access to large commercial shopping centres and multiple golf courses . The road network in the area is also excellent with the N332 and AP7 motorway close by.

ENERGETIC CERTIFIED

energy house

Image type unknown

https://www.viass.no//assets/images/viass/energy/F_

STIL	UTSIKT	DISTANSE TIL :	ORIENTERING
<ul style="list-style-type: none"> Mediterranean 	<ul style="list-style-type: none"> Panorama 	Strand : 500 m Flyplass: 20 Km Sentrum : 200 m	South East West
MØBLER	FLOARING	KJØKKEN	HAGE TERASSER
<ul style="list-style-type: none"> Uten møbler 	<ul style="list-style-type: none"> Fliser Stein 	<ul style="list-style-type: none"> Lukket kjøkken 	<ul style="list-style-type: none"> Ooverbygd terrasse Åpen terrasse
EXTRA	ENERGETIC CERTIFIED		
<ul style="list-style-type: none"> Heis 	energy house Image type unknown https://www.viass.no/assets/images/viass/energy/F_en-energy.png		

"OUR EXPERIENCE IS YOUR GUARANTEE"