



REF: # 6530

DENIA



#### INFO

PRIS: 695.000 €

BOLIG TYPE: Villa

STED: Denia

SOVEROM: 5

Bad: 4

BOAREAL ( m2 ): 355

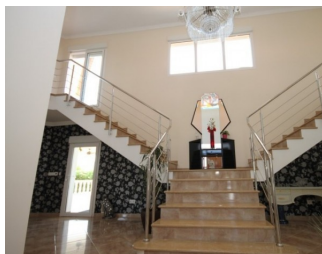
TOMT ( m2 ): 10.969

Terrasse ( m2 ): -

ÅR: -

ETASJER: -

MELDING -



#### BESKRIVELSE

Spectacular, luxury modern style property, located on a private plot of nearly 11.000 m2, south facing and totally private. It is the perfect setting for this magnificent five bedroom luxury villa, just a short 5 minute drive to the local shops and all amenities, and 10 minutes to the sea. There is a large drive flanked by palm trees, and then the entrance with central fountain and roundabout, with plenty of parking. You will surely be impressed by the size of the rooms, and the grand hallway and marble staircase. The living room is light and spacious, with a fireplace and large windows, and has direct access to the covered terrace and pool area. The kitchen is fully equipped and also has a centre island. On the ground level there are two beautiful guest suites, which also have direct access to the main covered terrace. At the top of the marble staircase are two more guest suites sharing a large bathroom. From here doors give direct access to an open terrace with spectacular 360° views of the Orba valley. The large master bedroom suite with dressing room and private bathroom is separate, on the other side of the stairs.

Also with access out onto the open terrace. Outside there is a fabulous sun terrace with large pool (10 x 5m) and gazebo. All around the property is a beautiful landscaped garden with various fruit trees, a decorative pond and aviary. Then beyond are orange orchards and the rest of the plot. Part of the plot is fenced. This unique property benefits from: underfloor heating, solar/electric energy, air conditioning, electric roller blinds, security glass, plenty of storage areas, and all top quality fittings. Viewing strongly recommended!



UTSIKT

- Panorama

PARKERING NR BILER

Garasje nr biler : 1

ENERGETIC CERTIFIED



**"OUR EXPERIENCE IS YOUR GUARANTEE"**