



REF: # 4287

ORIHUELA COSTA (SAN JAVIER)



INFO

PRIS:	325.000 €
BOLIG TYPE:	Villa
STED:	Orihuela Costa (San Javier)
SOVEROM:	3
Bad:	3
BOAREAL (m2):	134
TOMT (m2):	331
Terrasse (m2):	43
ÅR:	-
ETASJER:	-
MELDING	315.000 €

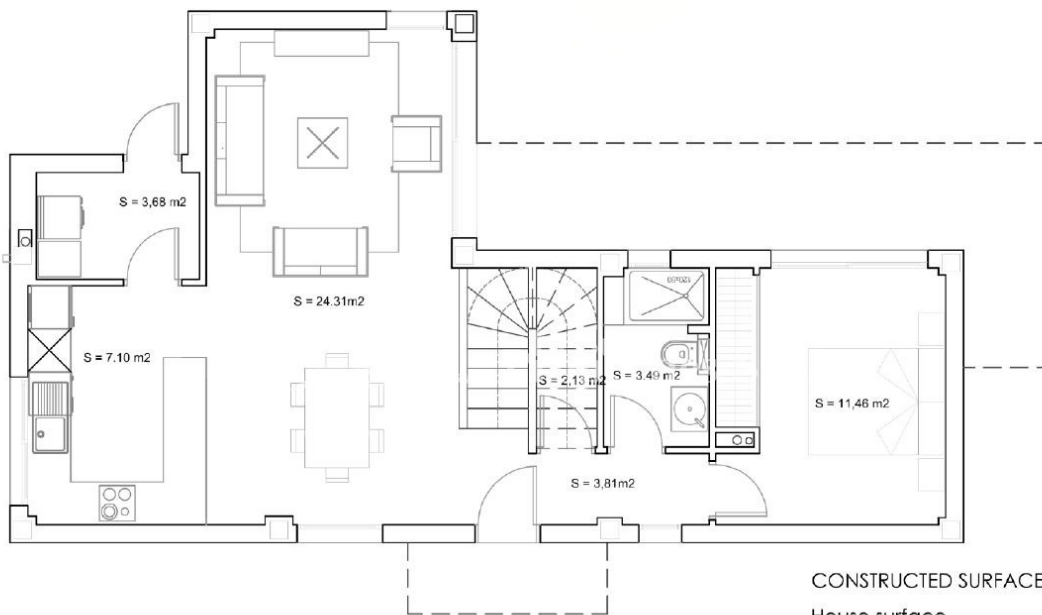
BESKRIVELSE

KEY READY VILLA located in SANTIAGO DE LA RIBERA (Murcia) 10 minutes walk from the BEACH. A luxury detached villa close to the sea including a plot of 315m2, 3 bedrooms, 3 bathrooms (2 ensuite), with a very nice private swimming pool of 3x6 and a completely finished garden and includes white goods. The two-storey Villa boasts 3 bedrooms, 3 bathrooms, modern kitchen and mezzanine level on the first floor overlooking the open-plan lounge/dining room which is fitted with floor-to-ceiling windows allowing the natural light to flood through and leading to a private garden and pool. The property includes off-road parking for two cars. The development is just a 10-minute walk from the beach, with local bus/train links only ten minutes from the properties. RMU Corvera International Airport is a 30 minute drive and Alicante Airport only 45 minutes via the AP-7 highway and N332 coast road.

ENERGETIC CERTIFIED

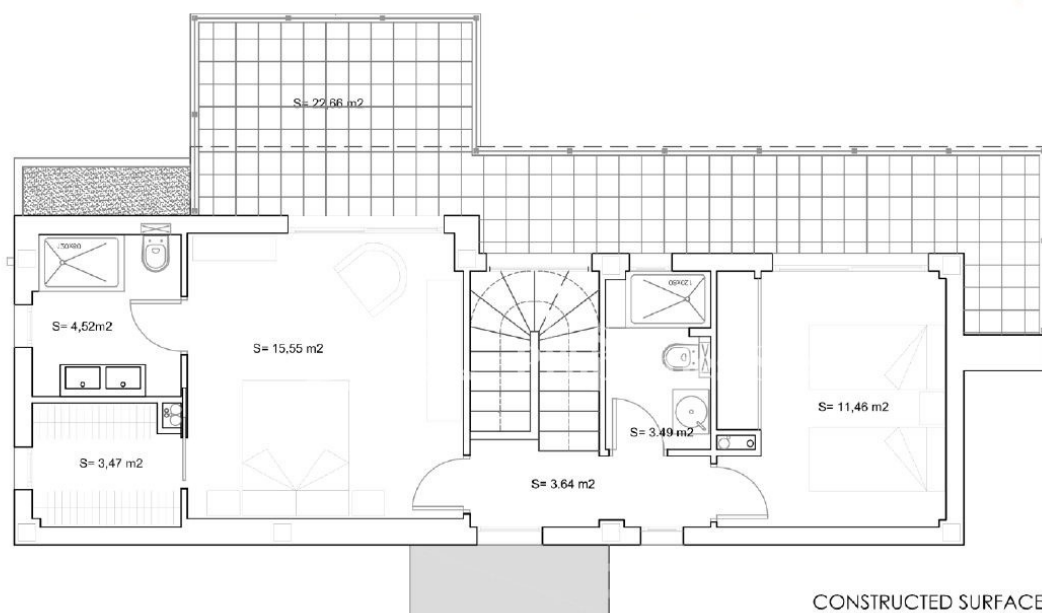


STIL	UTSIKT	AIRCONDITION	DISTANSE TIL :
<ul style="list-style-type: none">Contemporary	<ul style="list-style-type: none">Panorama	<ul style="list-style-type: none">Sentral aircondition	Strand : 500 m
			Flyplass: 10 Km
			Sentrum : 500 m
ORIENTERING	MØBLER	PARKERING NR BILER	HOVED BOLIG
South west	<ul style="list-style-type: none">Uten møbler	: 1	<ul style="list-style-type: none">Bad on suite
FLOARING	KJØKKEN	HAGE TERASSER	EXTRA
<ul style="list-style-type: none">FliserStein	<ul style="list-style-type: none">Åpent kjøkkenHvitevarerGranit benkeplate	<ul style="list-style-type: none">Ooverbygd terrasseÅpen terrasseUtebelysningAutomatisk vanningsystemPalme trærOpparbeidet hageInngjerdetStein murerPrivat hage	<ul style="list-style-type: none">Innebygde garderoberVinduer med dobbelt glassLager rom



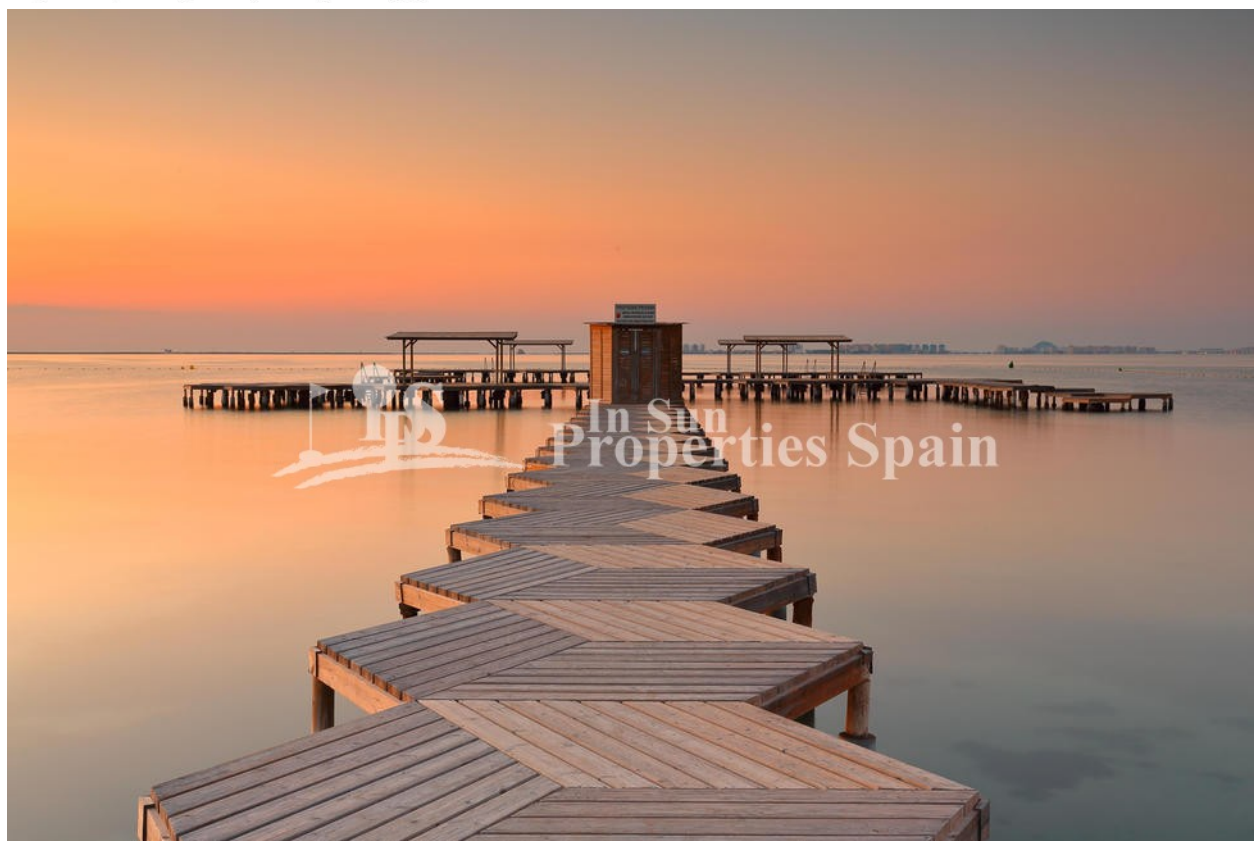
CONSTRUCTED SURFACES

House surface	143,85 m ²
Ground floor surf.	79,32 m ²
First floor surf.	64,53 m ²
Downstair terrace surf.	20,46 m ²
Upstair terrace surf.	22,66 m ²



CONSTRUCTED SURFACES

House surface	143,85 m ²
Ground floor surf.	79,32 m ²
First floor surf.	64,53 m ²
Downstair terrace surf.	20,46 m ²
Upstair terrace surf.	22,66 m ²







"OUR EXPERIENCE IS YOUR GUARANTEE"