



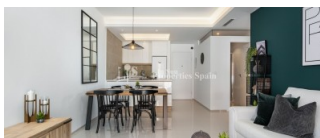
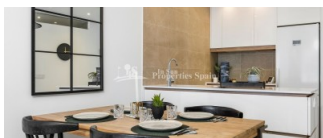
REF: # 5924

QUESADA-ROJALES (DONA PEPA)



INFO

| | |
|------------------|-----------------------------|
| PRIS: | 215.000 € |
| BOLIG TYPE: | Leilighet (Penthouse) |
| STED: | Quesada-Rojales (Dona Pepa) |
| SOVEROM: | 2 |
| Bad: | 2 |
| BOAREAL (m2): | 77 |
| TOMT (m2): | - |
| Terrasse (m2): | 146 |
| ÅR: | |
| ETASJER: | - |
| MELDING | - |



BESKRIVELSE

A STUNNING new development in DONA PEPA of 2 and 3 bedroom, 2 bathroom Ground and Top Floor Apartments. Ground floor of minimum 77m2 come with private 146m2 garden, from €177,000 and First Floor of minimum 96m2 come with private 129m2 roof solarium, from €215,000. These Apartments are from a well renowned builder with over 40 years experience, offering their same signature in terms of design, quality and finish. A home you will be proud to own! Doña Pepa is an elegant urbanization with wide avenues, wonderful views to the Natural Park and the salt lakes with a wide range of leisure activities and all the necessary amenities without having to take a car. It is only 30 minutes away from international airports, 35 minutes from Alicante and 5 minutes from the most beautiful beaches of the Costa Blanca. It is an area with good annual temperatures and a great atmosphere. The area of Doña Pepa has a widely varied infrastructure offering a multitude of shops, supermarkets, restaurants, cafes, medical centers, pharmacies, golf courses, banks, a 4* Hotel with a Spa, a church, a social center, a cultural center, sports areas, an aquapark, a school, two natural parks, a

religious center and high quality shopping complexes.



STIL

- Modern
- Contemporary

DISTANSE TIL :

Strand : +10 Km

Flyplass: 30 Km

Sentrum : 1 Km

ORIENTERING

South East West

MØBLER

- Uten møbler

PARKERING NR BILER

: 1

HOVED BOLIG

- Bad on suite

FLOARING

- Fliser
- Stein

KJØKKEN

- Åpent kjøkken
- Hvitevarer
- Granit benkeplate

HAGE TERASSER

- Ooverbygd terrasse
- Åpen terrasse
- Lekeplass
- Opparbeidet hage
- Privat hage
- Felles hage

OPPVARMING

- Gulv varme

EXTRA

- Innebygde garderober
- Sikkerhets dør
- Vinduer med dobbelt glass

PROPERTY GALLERY













"OUR EXPERIENCE IS YOUR GUARANTEE"