



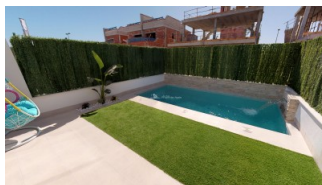
REF: # 7200

COSTA MURCIA (SAN PEDRO DEL PINATAR)



#### INFO

PRIS:	229.950 €
BOLIG TYPE:	Villa (Semi detached)
STED:	Costa Murcia (San Pedro del Pinatar)
SOVEROM:	3
Bad:	3
BOAREAL ( m2 ):	94
TOMT ( m2 ):	116
Terrasse ( m2 ):	39.50
ÅR:	
ETASJER:	-
MELDING	-



#### BESKRIVELSE

Semi detached villas located close to the town centre and beaches of SAN PEDRO DEL PINATAR. These beautiful villas have been thoughtfully designed to provide the perfect individual private contemporary living space, featuring double full glass sliding doors that open directly on to a large terrace with private swimming pool, enclosed gardens with off road parking. They boast 3 bedrooms, 2 bathrooms built area of 94m2 on a 115m2 plot. Located just a couple of minutes walk from the main town centre of San Pedro del Pinatar, just 5 minutes away from the Pinatar Arena sports centre, further 5 minutes to the beaches in EL Mojon. The new international airport of Murcia is just 30 minutes drive. There are miles and miles of paseo to explore ... an amazing place to ramble either in day or evening, with countless restaurants to choose from, and some great little tapas bars just by the sea, or the ever popular marina in Torre de la Horadada. This area offers a variety of sports activities, including seasonal water sports ... With some particularly good

golf courses very close by! \*\* OFFER \*\* “SUN ALL DAY with the generous rooftop solarium included (normal price is 15.000 € extra!) plus ELECTRICAL ITEMS IN THE KITCHEN & LED LIGHTING INCLUDED . Delivery 10 months from contract.



<b>STIL</b> <ul style="list-style-type: none"><li>• Modern</li><li>• Contemporary</li></ul>	<b>UTSIKT</b> <ul style="list-style-type: none"><li>• Panorama</li></ul>	<b>AIRCONDITION</b> <ul style="list-style-type: none"><li>• Stue</li><li>• Soverom</li></ul>	<b>DISTANSE TIL :</b> <div>Strand : 2 Km</div> <div>Flyplass: 40 Km</div> <div>Sentrum : 1 Km</div>
<b>ORIENTERING</b> <div>South East West</div>	<b>PARKERING NR BILER</b> <div>: 1</div>	<b>HOVED BOLIG</b> <ul style="list-style-type: none"><li>• Bad on suite</li></ul>	<b>FLOARING</b> <ul style="list-style-type: none"><li>• Fliser</li><li>• Stein</li></ul>
<b>KJØKKEN</b> <ul style="list-style-type: none"><li>• Åpent kjøkken</li><li>• Hvitevarer</li></ul>	<b>HAGE TERASSER</b> <ul style="list-style-type: none"><li>• Ooverbygd terrasse</li><li>• Åpen terrasse</li><li>• Opparbeidet hage</li><li>• Stein murer</li><li>• Privat hage</li></ul>	<b>EXTRA</b> <ul style="list-style-type: none"><li>• Innebygde garderober</li><li>• Sikkerhets dør</li></ul>	











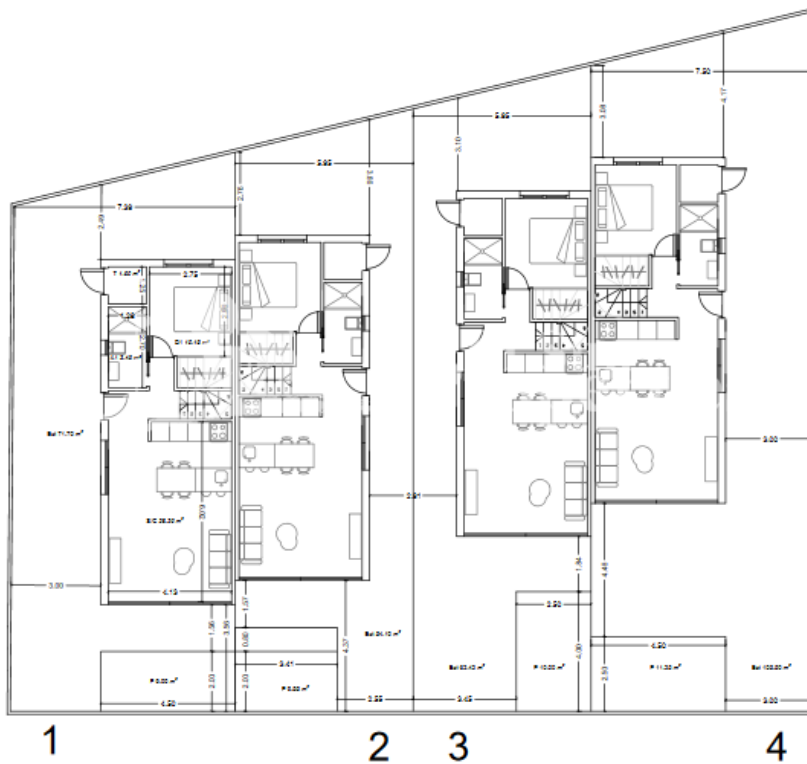








## PLANTA BAJA



### SUPERFICIES POR PARCELA

VIVIENDA 1	
USO	Superficie
Total Parcela	133.00 m <sup>2</sup>
Jardin Exterior	71.70 m <sup>2</sup>
Piscina	9.00 m <sup>2</sup>

VIVIENDA 2	
USO	Superficie
Total Parcela	116.00 m <sup>2</sup>
Jardin Exterior	54.10 m <sup>2</sup>
Piscina	9.55 m <sup>2</sup>

VIVIENDA 3	
USO	Superficie
Total Parcela	125.00 m <sup>2</sup>
Jardin Exterior	62.42 m <sup>2</sup>
Piscina	10.00 m <sup>2</sup>

VIVIENDA 4	
USO	Superficie
Total Parcela	169.00 m <sup>2</sup>
Jardin Exterior	105.50 m <sup>2</sup>
Piscina	11.25 m <sup>2</sup>

### SUPERFICIES VIVIENDA

Planta	Uso	Superficie
Baja	Vivienda (S. Coma)	52.00 m <sup>2</sup>
	Salón/Cocina	25.20 m <sup>2</sup>
	Dormitorio 1	10.15 m <sup>2</sup>
	Aseo 1	3.45 m <sup>2</sup>
	Trastero	1.80 m <sup>2</sup>
Alta	Vivienda (S. Coma)	42.00 m <sup>2</sup>
	Dormitorio 2	12.00 m <sup>2</sup>
	Aseo 2	3.20 m <sup>2</sup>
	Dormitorio 3	9.00 m <sup>2</sup>
	Aseo 3	3.20 m <sup>2</sup>
	Terraza	13.00 m <sup>2</sup>
TOTAL CONSTRUIDO VIVIENDA		94.00 m <sup>2</sup>









**"OUR EXPERIENCE IS YOUR GUARANTEE"**