



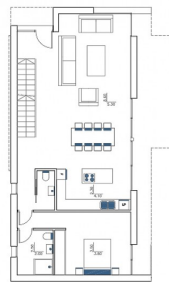
REF: # 7344

CALPE/MORAIRA (BENISSA COAST)

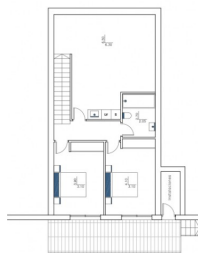


#### INFO

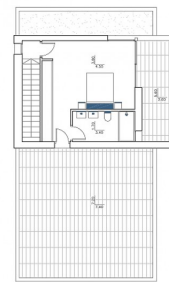
PRIS:	1.150.000 €
BOLIG TYPE:	Villa
STED:	Calpe/Moraira (Benissa Coast)
SOVEROM:	4
Bad:	3
BOAREAL ( m <sup>2</sup> ):	226
TOMT ( m <sup>2</sup> ):	1.100
Terrasse ( m <sup>2</sup> ):	-
ÅR:	-
ETASJER:	-
MELDING	790.000 €



Ben. Plottet	1080.00 m <sup>2</sup>
Spesifikasjon	Overflate
Plottet	1080.00 m <sup>2</sup>
Bygning	226.00 m <sup>2</sup>
Plottet	226.00 m <sup>2</sup>



Ben. Plottet	1080.00 m <sup>2</sup>
Spesifikasjon	Overflate
Plottet	1080.00 m <sup>2</sup>
Bygning	226.00 m <sup>2</sup>
Plottet	226.00 m <sup>2</sup>



Ben. Plottet	1080.00 m <sup>2</sup>
Spesifikasjon	Overflate
Plottet	1080.00 m <sup>2</sup>
Bygning	226.00 m <sup>2</sup>
Plottet	226.00 m <sup>2</sup>

#### BESKRIVELSE

Modern villa to be built in La Fustera, Benissa. The property is located close to the beach (400m) and amenities (200m) and enjoys sea views, especially from the first floor. The property is distributed over 3 floors. Ground floor; entrance, guest toilet, double bedroom with en-suite bathroom, open plan kitchen / dining / living room with large windows and access to the terraces, stairs to other floors. Top floor; double bedroom and en-suite bathroom / build-in wardrobe and large terrace. Underbuild; 2 double bedrooms, bathroom and washing room/storage room. The house is equipped with underfloor heating, air conditioning, modern kitchen with appliances and bathrooms with Roca sanitary, etc. In the exterior; large pool (5x10m), off road parking for 2 cars, ample terracing, entrance and pedestrian gate with inter-phone, garden with automatic watering system etc.

#### ENERGETIC CERTIFIED





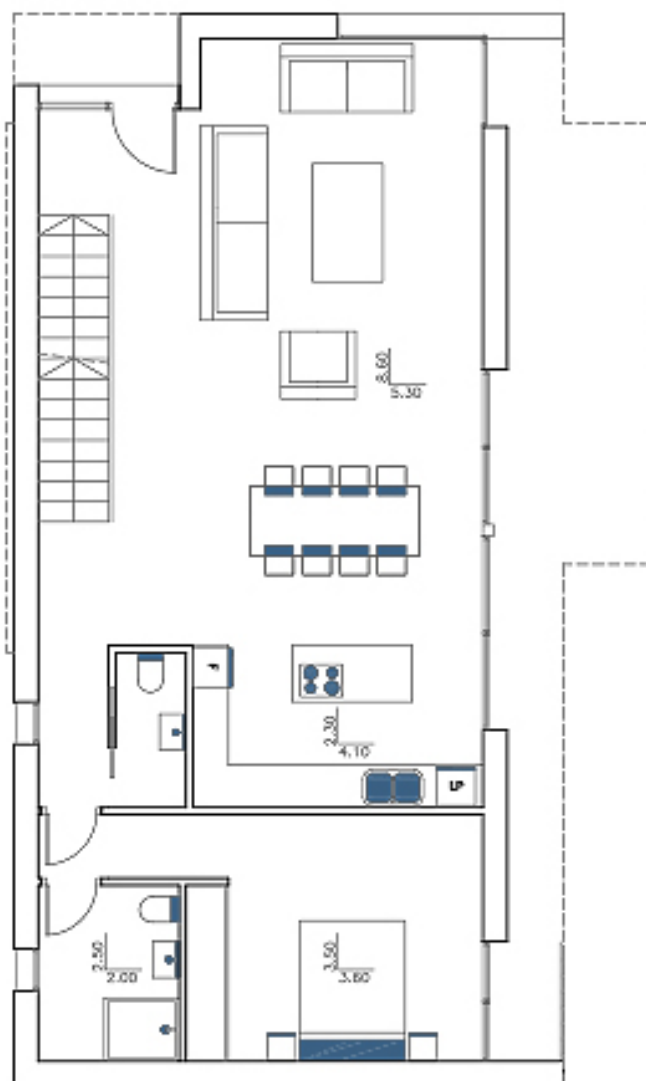
## UTSIKT

- Panorama
- Sjø utsikt

## OPPVARMING

- Sentral gas oppvarming



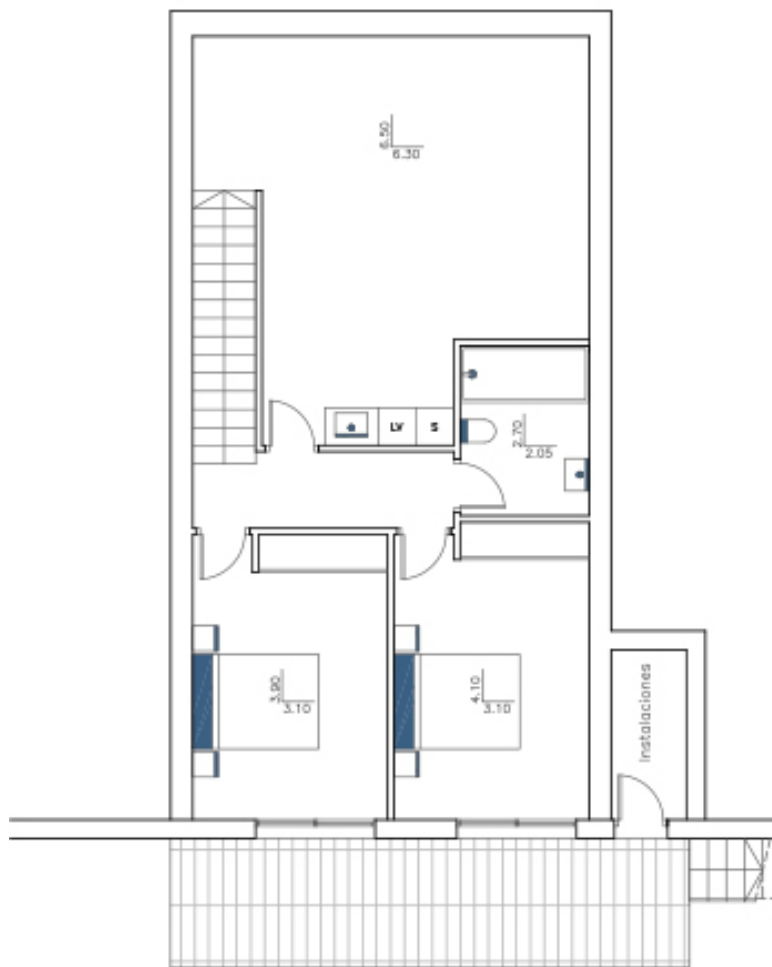


Sup. Parcela 1085.73 m<sup>2</sup>

Superficies	Construidas	Computable
<i>Planta Sótano</i>		
Vivienda	91.85 m <sup>2</sup>	28.00 m <sup>2</sup>
Porche	16.00 m <sup>2</sup>	16.00 m <sup>2</sup>
<i>Planta Baja</i>		
Vivienda	104.05 m <sup>2</sup>	104.05 m <sup>2</sup>
Porches	22.01 m <sup>2</sup>	22.01 m <sup>2</sup>
Piscina	50.00 m <sup>2</sup>	
Terraza pisc.	99.15 m <sup>2</sup>	
<i>Planta Alta</i>		
Vivienda	44.35 m <sup>2</sup>	44.35 m <sup>2</sup>
Porche	12.50 m <sup>2</sup>	12.50 m <sup>2</sup>
Terraza	57.72 m <sup>2</sup>	
total	486.98 m <sup>2</sup>	226.91 m <sup>2</sup>

máx.: 271.43 m<sup>2</sup>

## ANTEPROYECTO DE VIVIENDA UNIFAMILIAR AISLADA Y PISCINA

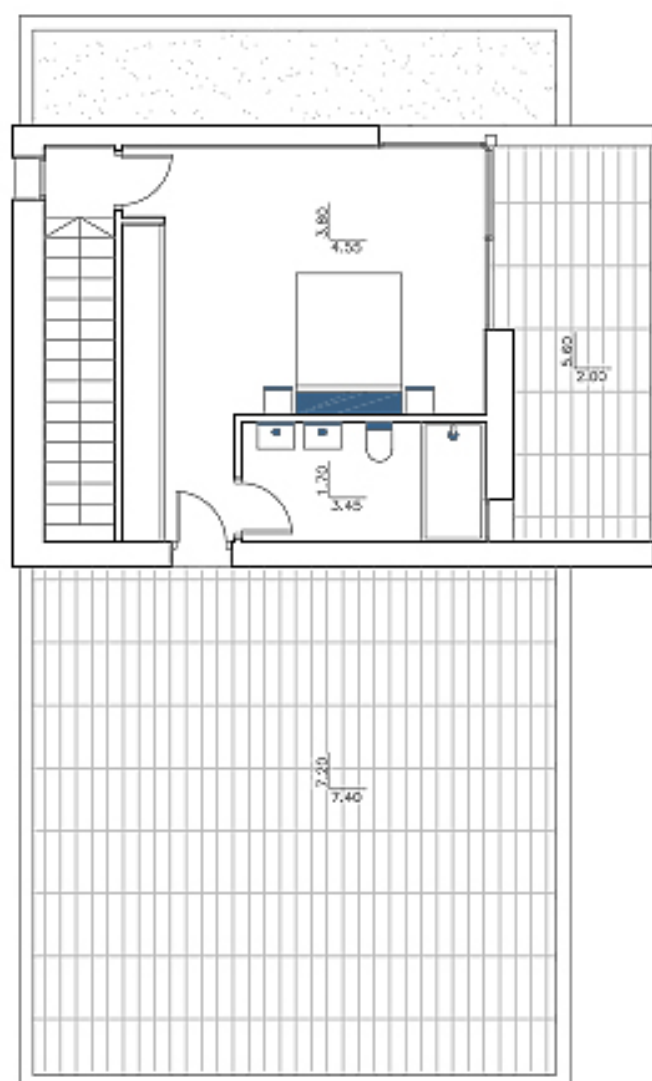


Sup. Parcela 1085.73 m<sup>2</sup>

Superficies	Construidas	Computable
<i>Planta Sótano</i>		
Vivienda	91.85 m <sup>2</sup>	28.00 m <sup>2</sup>
Porche	16.00 m <sup>2</sup>	16.00 m <sup>2</sup>
<i>Planta Baja</i>		
Vivienda	104.05 m <sup>2</sup>	104.05 m <sup>2</sup>
Porches	22.01 m <sup>2</sup>	22.01 m <sup>2</sup>
Piscina	50.00 m <sup>2</sup>	
Terraza pisc.	99.15 m <sup>2</sup>	
<i>Planta Alta</i>		
Vivienda	44.35 m <sup>2</sup>	44.35 m <sup>2</sup>
Porche	12.50 m <sup>2</sup>	12.50 m <sup>2</sup>
Terraza	57.72 m <sup>2</sup>	
total	486.98 m <sup>2</sup>	226.91 m <sup>2</sup>

max: 271.43 m<sup>2</sup>

## ANTEPROYECTO DE VIVIENDA UNIFAMILIAR AISLADA Y PISCINA

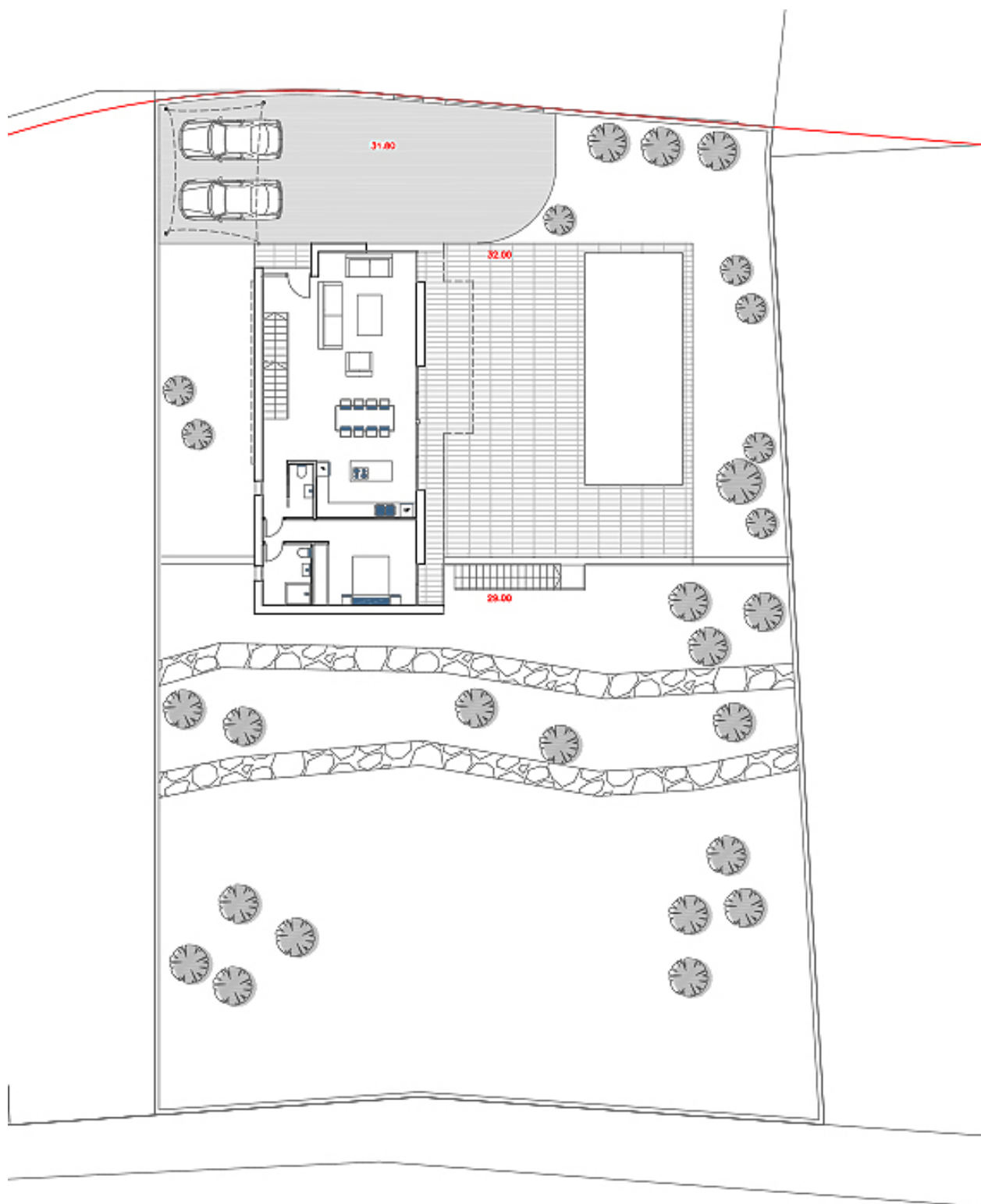


Sup. Parcela 1085.73 m<sup>2</sup>

Superficies	Construidas	Computable
<i>Planta Sótano</i>		
Vivienda	91.85 m <sup>2</sup>	28.00 m <sup>2</sup>
Porche	16.00 m <sup>2</sup>	16.00 m <sup>2</sup>
<i>Planta Baja</i>		
Vivienda	104.05 m <sup>2</sup>	104.05 m <sup>2</sup>
Porches	22.01 m <sup>2</sup>	22.01 m <sup>2</sup>
Piscina	50.00 m <sup>2</sup>	
Terraza pisc.	99.15 m <sup>2</sup>	
<i>Planta Alta</i>		
Vivienda	44.35 m <sup>2</sup>	44.35 m <sup>2</sup>
Porche	12.50 m <sup>2</sup>	12.50 m <sup>2</sup>
Terraza	57.72 m <sup>2</sup>	
total	486.98 m <sup>2</sup>	226.91 m <sup>2</sup>

mas: 271.43 m<sup>2</sup>

## ANTEPROYECTO DE VIVIENDA UNIFAMILIAR AISLADA Y PISCINA



ANTEPROYECTO DE VIVIENDA  
UNIFAMILIAR AISLADA Y PISCINA

N

**"OUR EXPERIENCE IS YOUR GUARANTEE"**