



REF: # 8897

ORIHUELA COSTA (VILLAMARTIN-PAU26)



#### INFO

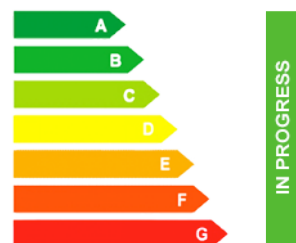
PRIS:	169.000 €
BOLIG TYPE:	Leilighet
STED:	Orihuela Costa (Villamartin- Pau26)
SOVEROM:	2
Bad:	2
BOAREAL ( m2 ):	75
TOMT ( m2 ):	-
Terrasse ( m2 ):	60
ÅR:	
ETASJER:	-
MELDING	-



#### BESKRIVELSE

NEW- Modern, Residential complex with south orientation in PAU-26 VILLAMARTIN. The project comprises 24 apartments of 2/3 bedroom, 2 bathroom, ground floor with 60m2 private garden and top floor with 18 m2 terrace and 75m2 private roof terrace and stunning views and are lovely communal areas with large garden areas and spacious swimming pool, as well as underground parking space with storage room. 2 bed, 2 bath from €169.000 ground floor and 2 bed, 2 bath with roof terrace from € 189.000 and 3 bed, 2 bath from €225.000 . Beautiful modern design, ideal for holiday home or the perfect property in the sun all year round. Close to all amenities, with regular bus routes to neighboring areas including the La Zenia Boulevard shopping centre, Villamartin Plaza . Torrevieja Hospital is a 10 min drive away ,15 minutes drive to the beaches of Orihuela Costa and four 18hole golf courses, 40 minutes to Alicante or Murcia Airport. Handover follows: 15 month's after full building license!

#### ENERGETIC CERTIFIED



<b>STIL</b> <ul style="list-style-type: none"><li>• Modern</li><li>• Contemporary</li></ul>	<b>UTSIKT</b> <ul style="list-style-type: none"><li>• Panorama</li></ul>	<b>AIRCONDITION</b> <ul style="list-style-type: none"><li>• Sentral aircondition</li></ul>	<b>DISTANSE TIL :</b> <div>Strand : 4 Km</div> <div>Flyplass: 40 Km</div> <div>Sentrum : 2 Km</div>
<b>ORIENTERING</b> <div>South west</div>	<b>MØBLER</b> <ul style="list-style-type: none"><li>• Uten møbler</li></ul>	<b>PARKERING NR BILER</b> <div>: 1</div>	<b>HOVED BOLIG</b> <ul style="list-style-type: none"><li>• Lagerrom</li></ul>
<b>FLOARING</b> <ul style="list-style-type: none"><li>• Fliser</li></ul>	<b>KJØKKEN</b> <ul style="list-style-type: none"><li>• Åpent kjøkken</li><li>• Hvitevarer</li><li>• Granit benkeplate</li></ul>	<b>HAGE TERASSER</b> <ul style="list-style-type: none"><li>• Ooverbygd terrasse</li><li>• Åpen terrasse</li><li>• Utebelysning</li><li>• Inngjerdet</li><li>• Stein murer</li><li>• Privat hage</li><li>• Felles hage</li></ul>	<b>EXTRA</b> <ul style="list-style-type: none"><li>• Innebygde garderober</li><li>• Sikkerhets dør</li><li>• Vinduer med dobbelt glass</li><li>• Lager rom</li></ul>















## VIVIENDA 26-12



### PLANTA BAJA

VIENDAS : 3 DORMITORIOS

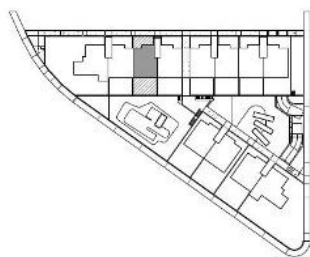
SUPERFICIE CONSTRUIDA

<b>SUPERFICIE CERRADA</b>	<b>87,69 m2</b>
PORCHE	17,50 m2
TERRAZA DESCUBIERTA	250,21 m2
<b>TOTAL TERRAZA</b>	<b>267,71 m2</b>
<b>TOTAL SUPERFICIE</b>	<b>355,40 m2</b>

0 0,5 1 2 3  
ESCALA GRÁFICA



VIVIENDA 26-3

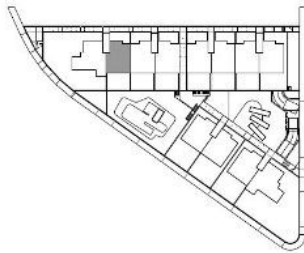


PLANTA BAJA  
VIENDAS : 2 DORMITORIOS  
SUPERFICIE CONSTRUIDA

<b>SUPERFICIE CERRADA</b>	<b>75,22 m2</b>
PORCHE	18,00 m2
TERRAZA DESCUB. DELANTERA	21,75 m2
TERRAZA DESCUB. TRASERA	20,25 m2
<b>TOTAL TERRAZA</b>	<b>60,00 m2</b>
<b>TOTAL SUPERFICIE</b>	<b>135,22 m2</b>



## VIVIENDA 26-14



PLANTA PRIMERA  
VIENDAS : 2 DORMITORIOS  
SUPERFICIE CONSTRUIDA

<b>SUPERFICIE CERRADA</b>	<b>75,22 m2</b>
TERRAZA PLANTA VIV	18,00 m2
SOLARIUM	75,40 m2
<b>TOTAL TERRAZA</b>	<b>93,40 m2</b>
<b>TOTAL SUPERFICIE</b>	<b>168,62 m2</b>

0 0,5 1 2 3  
ESCALA GRÁFICA







PLANTA BAJA

RESIDENCIAL EL AMANECER VII  
- SUNRISE VII  
PAU-26 - ORIHUELA COSTA







 In Sun  
Properties Spain











***"OUR EXPERIENCE IS YOUR GUARANTEE"***